

# Peak – A Windows Mobile Flickr Uploader

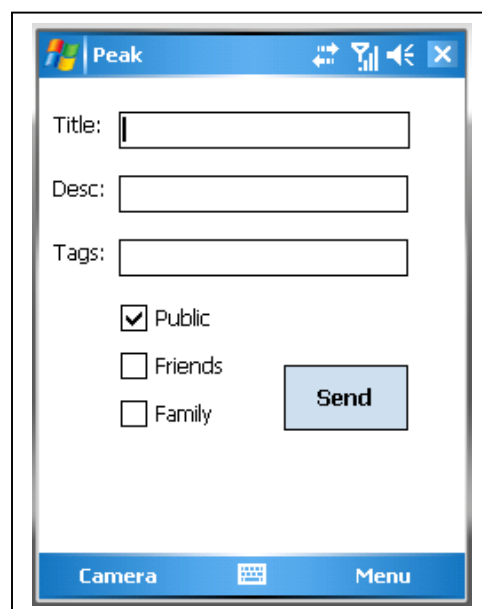
## Pre Installation

To use Peak, you will need a Windows Mobile 5 enabled device. This application has been tested on the HTC Apache (Verizon XV6700, Sprint PPC-6700) and Palm Treo 700w. The application requires internet connectivity, through either WiFi or your cellular provider. Note that you may incur upload charges for use of the Internet connection. You will also need a Flickr account, available at [www.flickr.com](http://www.flickr.com). Finally, you must have the Microsoft .NET Compact Framework (CF) 2 installed on your device. It is available from Microsoft.

## Installation

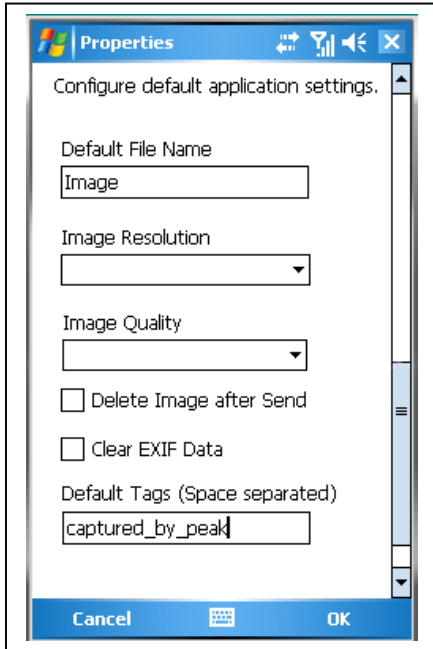
Install Peak by copying the CAB file to your Windows Mobile device.

- Connect your device to your computer using ActiveSync
- In the ActiveSync window on your PC, click the “Explore” button
- Drag and drop the peak.cab file to the mobile device
- On your mobile device, go to programs / file explorer
- Navigate to My Device / My Documents
- Select the peak cab file
- You may see a security warning about installing an unsigned application. Say ‘Yes’ to install
- You may be asked where to install the application. It can run on the device or on a storage card. We recommend installing on the device for best performance



## Configuration

Before using Peak, you will want to configure your preferences. The preferences screen allows you to set defaults for your camera, handle images after sent, and configure Peak for your device. To set preferences, open Peak and go to *Menu / App Options*



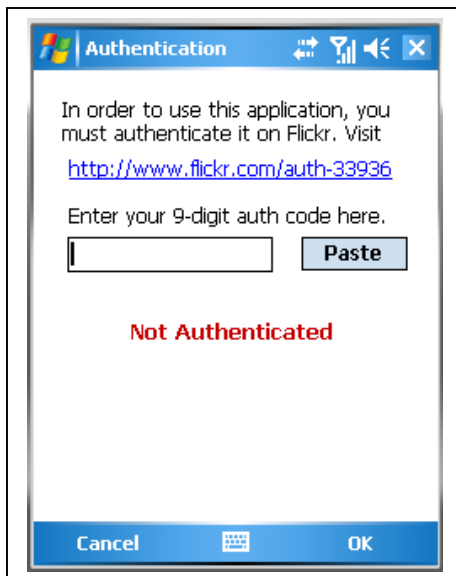
- **Default File Name:** Sets the default name for captured images. Images are stored temporarily in My Documents/My Pictures. This folder must exist for Peak to operate
- **Image Resolution:** Sets the default resolution for captured images. Available options are: 160x120, 320x240, 640x480, 1280x1024, 1600x1200
- **Image Quality:** Sets the default compression for captured images. Available options are: Default, Low, Normal, High
- **Delete Image after Send:** If checked, deletes the captured image from your device after a successful send
- **Clear EXIF Data:** Some devices attach EXIF data to the captured image that is incompatible with Flickr. Select this option to remove it

*Note: If you are using an HTC Apache (Verizon XV6700, Sprint PPC-6700), you must select this option. If you are using a Palm Treo 700w, you must NOT select this option. Doing so will cause out-of-memory errors.*

- **Default Tags:** Text in this field will automatically be added to the tags field for all captured images

## Usage - Authentication

To use Peak, you must first authenticate it with Flickr. To authenticate, open Peak and go to *Menu / Flickr Key*. Select the hyperlinked address, and it will open in Internet Explorer, or your preferred browser.



- Sign into Flickr, and approve Peak for use.
- You will be given a 9-digit code
- Highlight the code and select *Copy*.
- Return to Peak and click on the *Paste* button
- Click OK to continue

The token is valid for a limited time, and may need refreshed. You will see an *Invalid Token* error message when sending an image if your token is invalid.

## Usage – Capturing and Posting

Once you have configured the Peak application options and authenticated with Flickr, you are ready to capture images. Open Peak and click on *Camera*. Your phone's camera interface will open. Select your subject and take a picture. Once complete, you will return to Peak.

Fill in a title, description, and image tags (if desired). You can also configure the security on the captured image, available to *Public*, *Friends*, or *Family*. Leave all checkboxes blank to keep the image private.

Once you have completed the fields, click Send. The send process may take a few seconds, depending on your device and connection speed. You will receive an Image Posted message when your image has been successfully uploaded to Flickr. It is immediately available in your Flickr account.

## Troubleshooting

There are a few common errors you may see while using Peak. Troubleshooting usually involves modifying the application options, or re-authenticating to Flickr.

### **Q. When sending an image, I receive an error: 3 – General Upload Failure**

A. You may be sending an image with an invalid EXIF header. This usually happens from HTC Apache devices. Go to *Menu / App Options* and select “Clear EXIF Data”.

### **Q. When sending an image, I receive an error: 98 – Invalid Auth Token**

A. The authentication token either was not configured or has expired. Go to *Menu/ Flickr Key* and re-authenticate.

### **Q. When sending an image, I receive an Out Of Memory Exception**

A. You are using the *Clear EXIF Data* option on a device with limited memory. Go to *Menu / App Options* and uncheck “Clear EXIF Data”. If you are still unable to send an image, please file a bug report.

## Known Issues

- When closing Peak, the camera window may still be running – this is a known issue with the .NET framework
- Peak saves files in /My Documents/My Pictures – this is not user-modifiable
- The EXIF header removal requires opening and re-saving the image, causing problems on devices with low RAM
- The Flickr authentication tokens may expire. Future versions will store Flickr usernames and passwords, and will regenerate tokens